

# Commercial Grade Reverse Osmosis System

*NuStream's affordable line of RO's are designed with the end user in mind. All the features you need with a small footprint makes this the perfect system for your commercial or industrial application.*

## **A Standard Design with Maximum Versatility**

- Expandable configurations
- Wheels for easy serviceability and mobility
- 115V Single phase

## **Conserves Water**

- Adjustable reject recovery rates send less water down the drain

## **Rust Free Design**

- Free of brass, copper, and lead
- Power coated aluminum frame keeps the system looking like new year after year

## **Multi-Functional Controller Offers All the Features You Need**

- Automatic membrane feed flush on start and stop
- Optional divert for poor quality water
- Alarms include:
  - High conductivity
  - Low feed pressure
  - Tank low alarm
- Tank full start / stop
- Readouts for water temperature and hours of operation

## **Optional Facilities Management Communication**

- Communicates conductivity, system status, alarms, operation hours and temperature to the building control system

## **Optional Pretreatment Injection Configurations**

- Prewired and pre-plumbed for easy integration for chemical pretreatment package
  - Chlorine destruct
  - Anti-scalant
  - Clean-in-Place optional



*Compact design takes up little floor space yet produces up to 5,400 gallons per day. Quick connect and wheels make this system easy to maneuver for portability.*

*Image shown with optional RO skid mounted distribution pump*

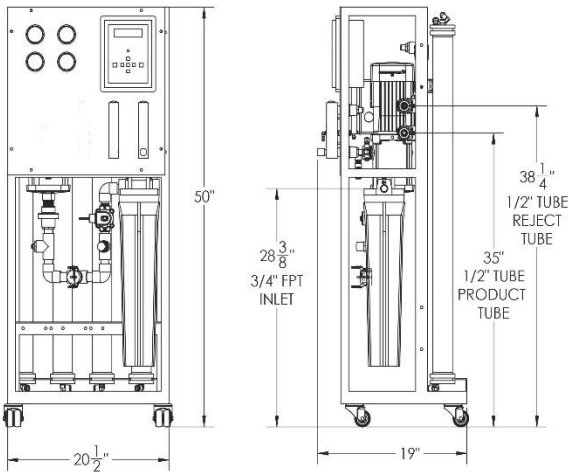
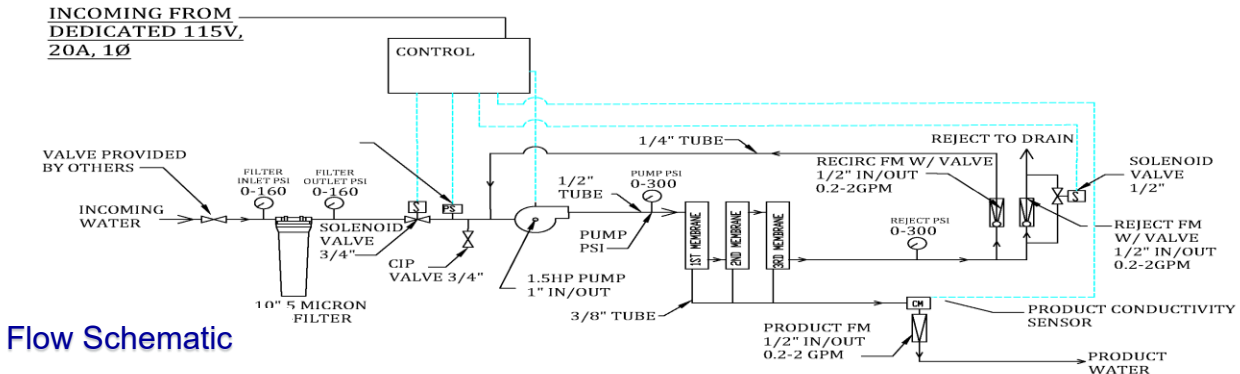


Intertek  
5012025  
Conforms to  
UL Std. 979  
Certified to  
CSA Std.  
C22.2#14

# Series CGD Specifications

5,000 - 10,000 Gallons Per Day

## CGD34 FLOW SCHEMATIC



Dimensions

### Temperature Correction Flow Rate

MODEL	77° F 55° C	62° F 17° C	50° F 10° C
CGD 14	1.25 GPM 1,800 GPD	.97 GPM 1,440 GPD	.78 GPM 1,130 GPD
CGD 24	2.5 GPM 3,600 GPD	1.95 GPM 2,800 GPD	1.5 GPM 2,268 GPD
CGD 34	3.75 GPM 5,400 GPD	2.9 GPM 4,200 GPD	2.3 GPM 3,400 GPD

	CGD 14	CGD 24	CGD 34
<b>PERFORMANCE</b>			
Nominal Rejection	99%	99%	99%
Production / GPD*	1,800	3,600	5,400
Product Flow / GPM*	1.25	2.5	3.75
Recovery	50-75%	50-75%	50-75%
<b>ELECTRICAL</b>			
Single Phase	115V, 20 Amp Dedicated Receptacle		
Horsepower / Amps	1.5 HP / 14.6 A		
<b>MEMBRANES</b>			
Size	4" x 40"	4" x 40"	4" x 40"
Quantity	1	2	3
Type	Thin Film Nanocomposite (TFN)		
<b>FEED WATER REQUIREMENTS</b>			
Chlorine Tolerance	< 0.1 Parts Per Million		
Temperature	Maximum 113° F / 45° C		
Operating pH Range	4-10		
Cleaning pH	2-12		
Pre-Filtration	5-Micron		
Membrane Pressure Range (PSIG)	120-160		
Max. Fouling Index (SDI)	< 5.0		
<b>DIMENSIONAL DATA &amp; WEIGHT</b>			
Connections	Inlet 3/4" FIP / Outlet 1/2" QC / Drain 1/2" QC		
Height x Width x Depth	50" H x 20" W x 18" D		
Weight / approximate	195 lbs.		

\*Product flow rates vary with pressure and temperature. Models are rated at 77° F (25° C) with feed water of 1500 PPM NaCl solution @ 150 psi pressure. Permeate flow varies + or - 15%.