

NuSurg All in One

For Surgery Centers



1257 Stanley Ave, Dayton, OH 45404

A complete water treatment system for surgery centers, dental offices, eye clinics

Meet the ST108 Standards with the Smallest System in the Industry

In August 2023 ANSI/AAMI released new standards for the water used to clean, rinse, sterilize and disinfect instruments for surgery. There are now limits for Utility Water, Critical Water and Steam. To achieve this, several types of water treatment technology are needed.

NuSurg occupies 25% of the space and cuts cost by half compared to alternative systems.

The NuSurg System Has it All

Smallest Footprint

Competitive price

Meets all regulatory requirements

Free 24/7 phone support

Carbon & Anti-Scalant Filter

Particulate Filter

RO Membranes

Deionizer Cartridge

Ultraviolet Purifier

Validated Bacteria/Endo Filter

RO and Distribution Pumps

All the technology you need to meet the standards.



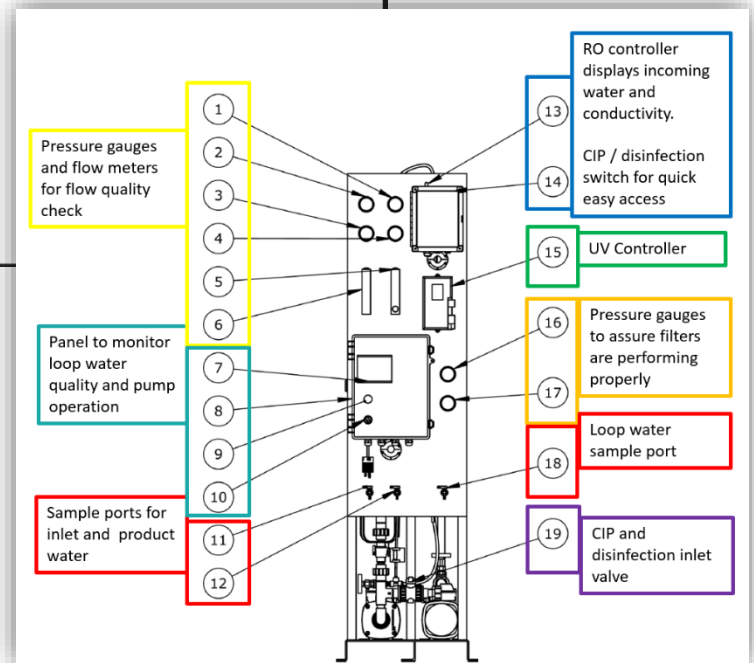
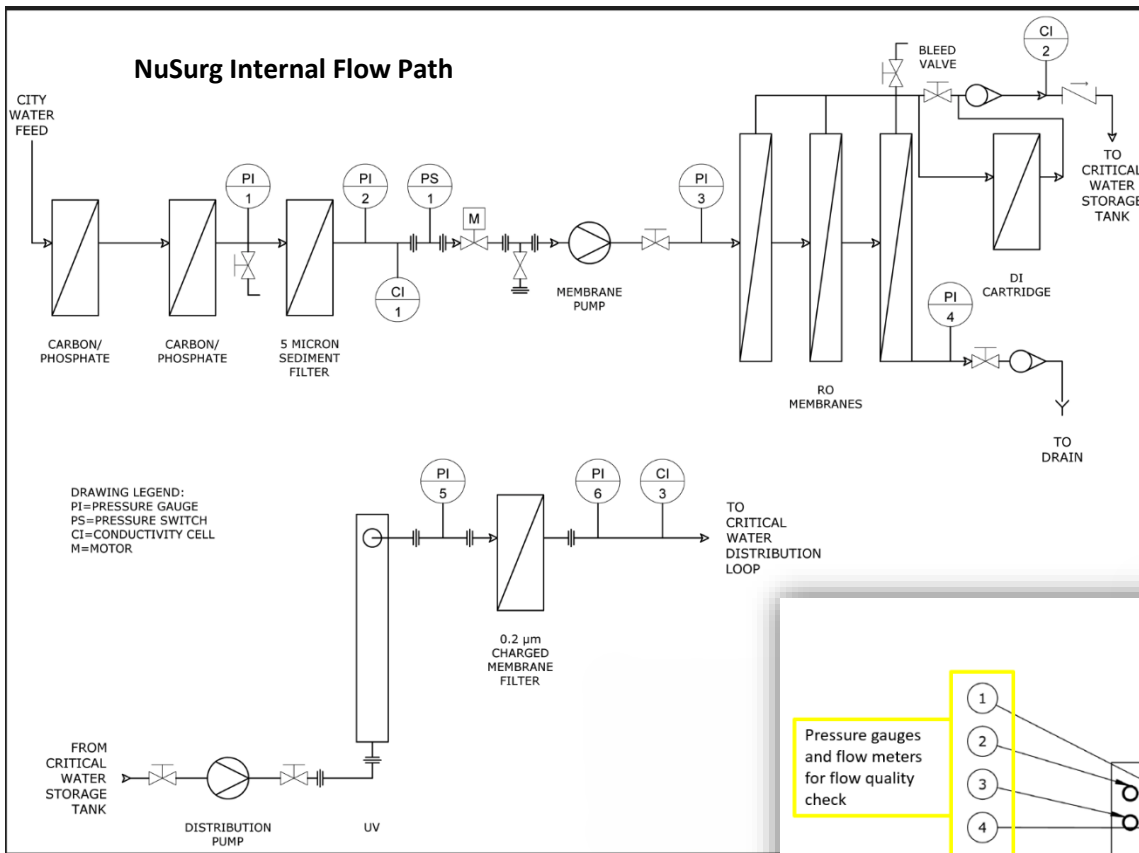
COMPONENT	PURPOSE	MODEL
Carbon & Anti-Scalant Filter	Extends membrane life by removing chlorine and hardness minerals that cause scale	130310
Particulate Filter	Removes >5 microns particulate to reduce clogging of the membrane	130400
RO Membrane	Purifies the water by removing up to 99% of total dissolved solids	160205
Deionizer Cartridge	Polishes the RO water to higher quality to help ensure critical water standards are achieved	136620
Ultra-Violet Purifier	Destroys harmful bacteria	141312
CMF Validated Filter	Removes bacteria and endotoxin	131700
Pumps 240V Single phase	1 st pump pushes water from pretreatment components through RO membranes. 2 nd pump distributes water from storage tank through loop and point of use.	400001
Storage Tank Sold separately	Keeps water recirculating and fresh. 55- gallon and 100-gallon options	55- 870010 100- 870110

Pair with a High Purity Storage Tank for Continuous Fresh Water Supply



55- or 100-gallon cone bottom tank reduces bacteria growth while storing and recirculating the water from the loop back through the NuSurg system. Includes internal spray ball for easy disinfection.

Vent filter keeps impurities from entering the tank. Skidded single point electrical connection. 240V/1 phase, 20 amp dedicated. 3/4" FIP inlet, 3/8" permeate quick connect, 3/8" reject quick connect.



NuSurg SP	
Performance	
Nominal Rejection	99%
Production (GPD) 1-4 Membranes *	540, 1080, 1620
Product Flow (GPM) 1-4 Membranes *	0.375, 0.75, 1.125
Recovery	50%
Power Requirements	
Voltage	240
Phase	1
Amps	14.4
Electrical Connection	NEMA6-20
Pumps	
Grundfos CM	
Horsepower (Each)	1.06
Membranes	
Size	2.5" x 40"
Type	Thin Film Nanocomposite (TFN)
Quantity	3
DI Polish	
DI Cartridge	4.5" x 20" high capacity cartridge
UV	
UV System	3.5" x 20" 316SS Reactor
Feed Water Requirements	
Chlorine Tolerance	<0.1 PPM
Temperature	Maximum 80°F
Operating pH	2-10
Cleaning pH	1-12
Pre-Filtration (Included)	5-micron 4.5" x 10" cartridge
Pre-Treatment (2 Included)	Carbon/Phosphate 4.5" x 10" cartridge
Membrane Pressure Range (PSI)	120-160
Max Fouling Index (SDI)	<5.0
Dimensional Data	
Connections	RO Inlet: 0.75" FPT RO Outlet: 0.375" Tube RO Drain/Reject: 0.375" Tube Distribution Inlet: 1" SOC/FPT Distribution Outlet: 0.5" FPT/0.75" FPT
Shipping Weight (lb.)	260

*Product flow rate varies with temperature. All models are rated at 77° F (25° C) with feed water of 1500 ppm NaCl Solution @ 150 psi applied pressure.

NuStream - Your Partner for Quality and Compliance

With over four decades of expertise, NuStream is committed to delivering top-tier products.

As a long-standing member of multiple AAMI committees, we possess a crucial understanding of the requirements for operating a successful SPD ensuring patient safety while meeting industry standards.

We listen and we care. And all that equals a very high-quality customer experience.